

| DATE:   | REVISIONS:                          |
|---------|-------------------------------------|
| 5/11/14 | Increase top NO TEXT AREA to 10mm   |
| 23/7/15 | Add front and back panel indicators |
|         |                                     |

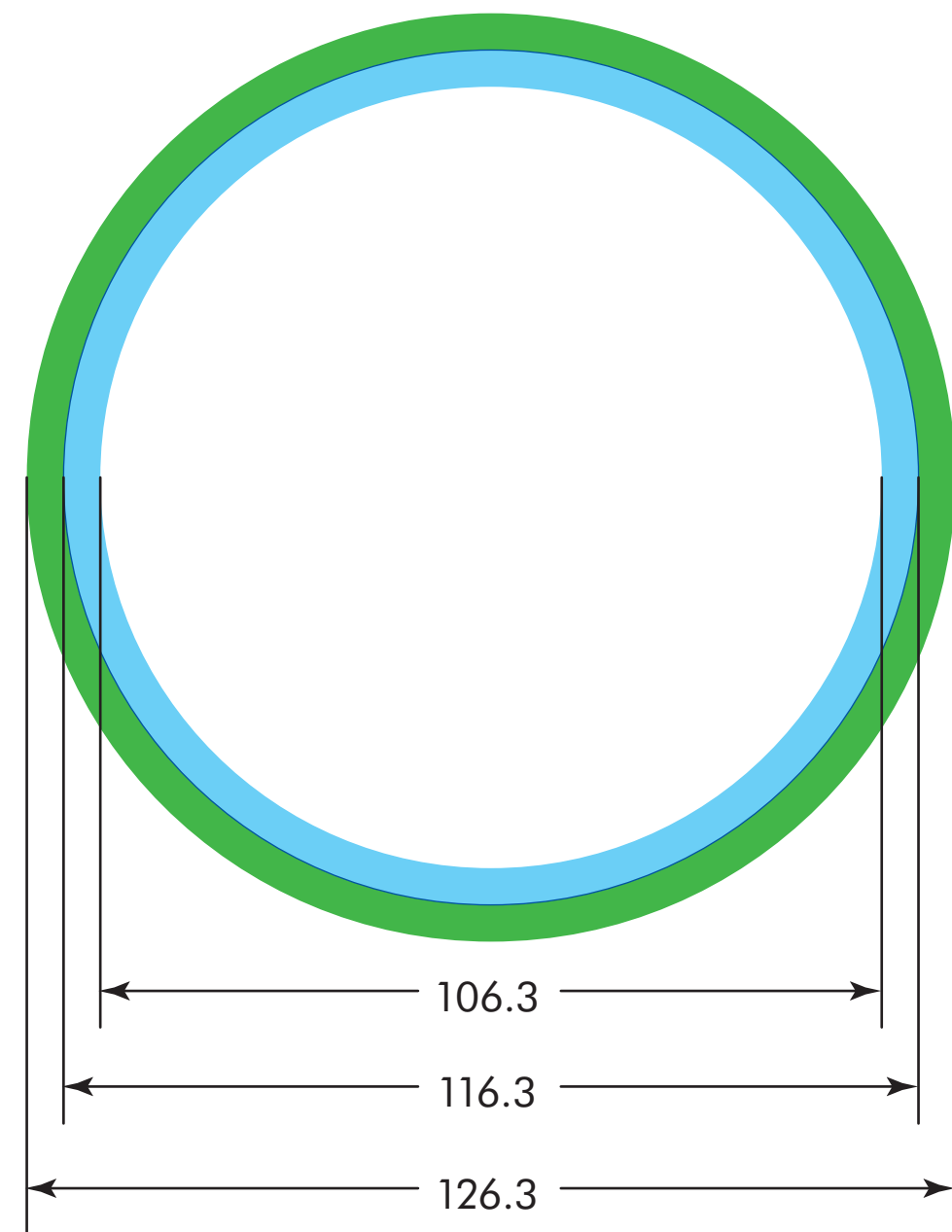
| ARTWORK TEMPLATE    |                          |                            |
|---------------------|--------------------------|----------------------------|
| 1180mL Base and Lid |                          |                            |
| MATERIAL: Plastic   | NOMINAL CAPACITY: 1000mL | UNDER LID CAPACITY: 1180mL |

|              |             |
|--------------|-------------|
| STANDARD No. |             |
| AUTH BY:     |             |
| DATE:        | 27/07/2012  |
| MADE AT:     | TULLAMARINE |

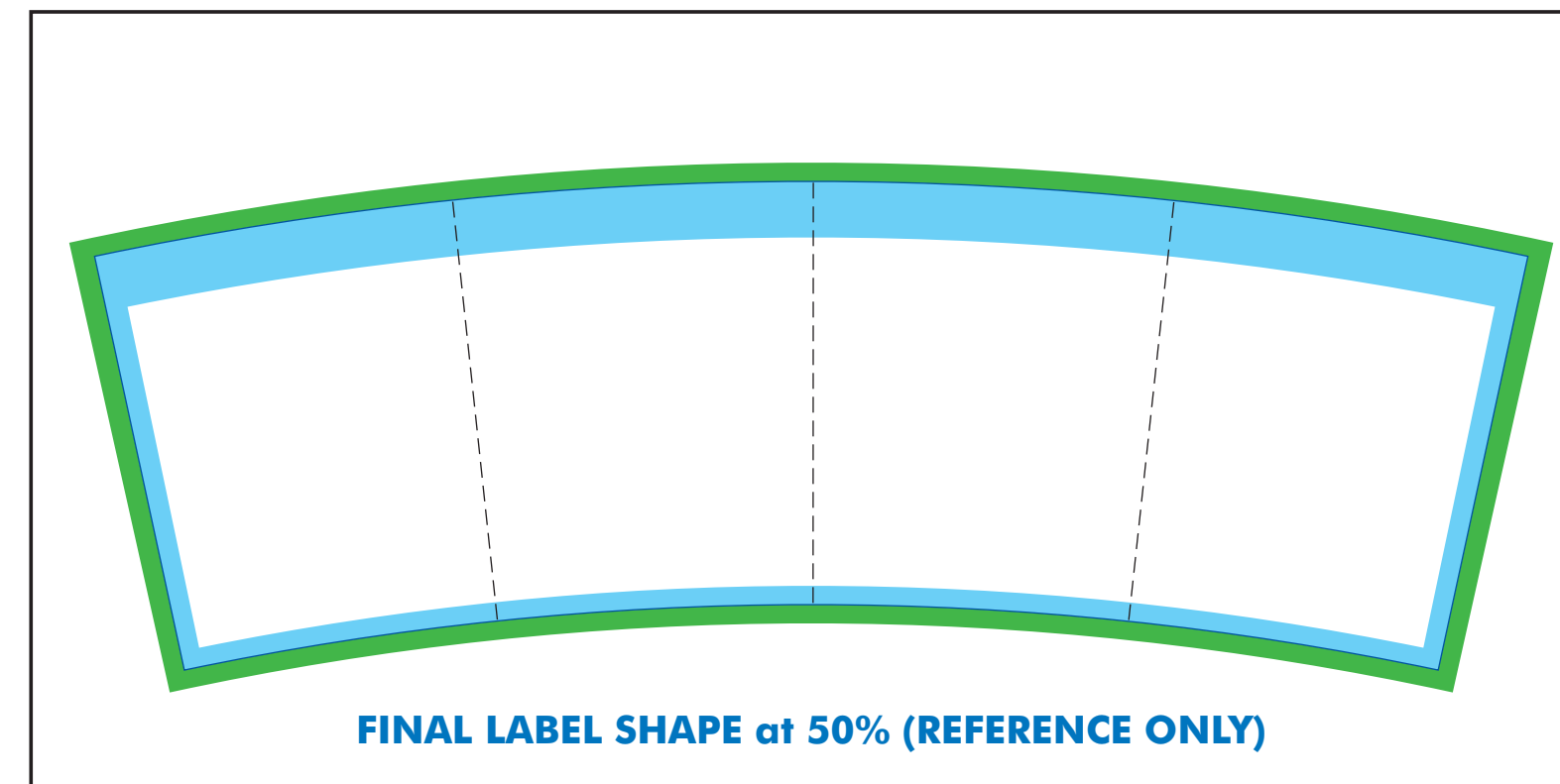
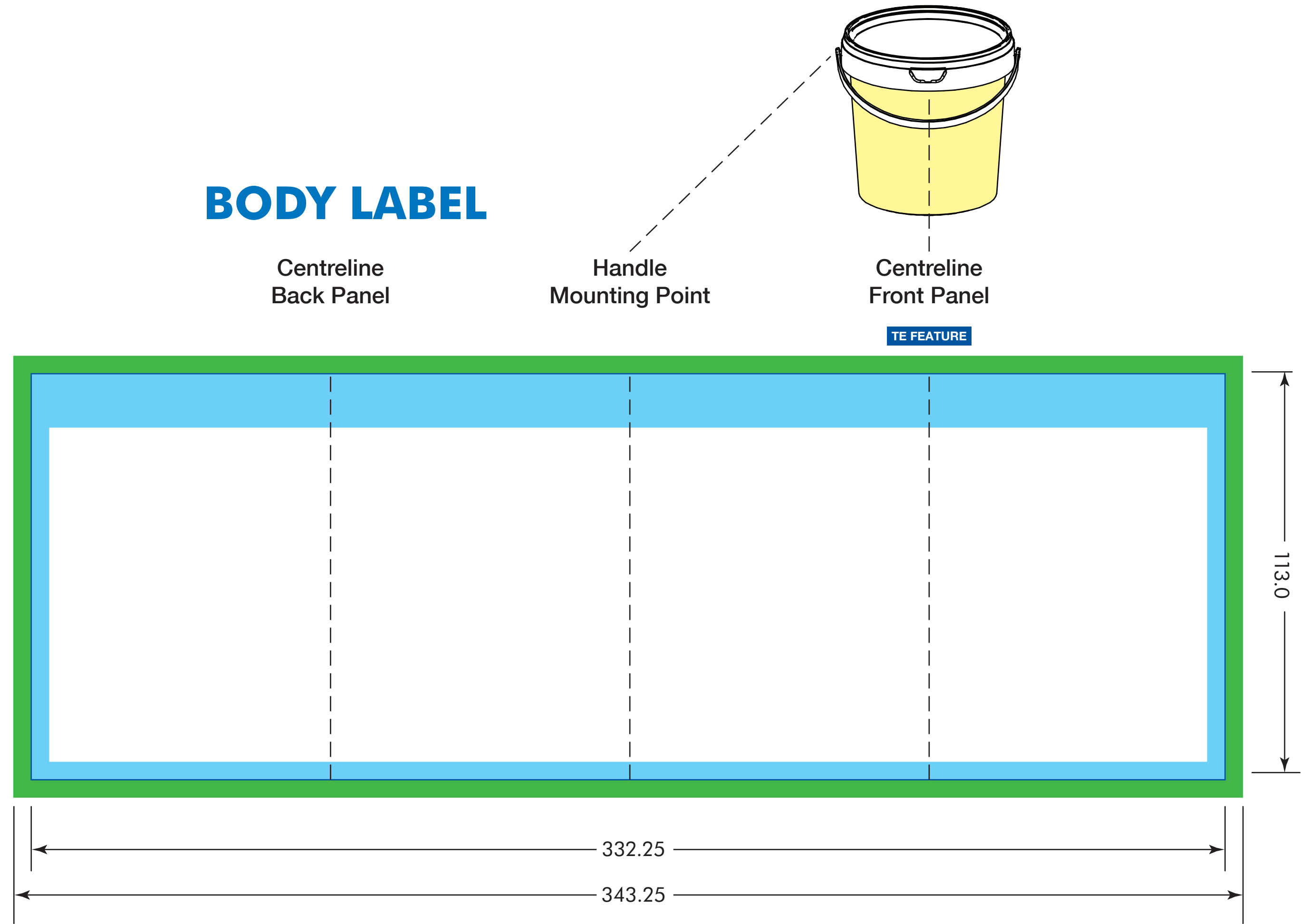
**NOTE:**

- 1) ALL MEASUREMENTS IN MILLIMETRES
- 2) DUE TO VARIATION IN MATERIAL AND EXPANSION, DIMENSIONS MAY VARY.

**LID**



**BODY LABEL**



No Text (Type) Area  
 Bleed 5.0mm (min)