



DATE:	REVISIONS:
27/07/12	Add lid label

ARTWORK TEMPLATE

10.0 Litre XlerPail™
Plastic TE Pail

STANDARD No. 10.0 Litre TE Plastic

AUTH BY:

DATE: 27/07/12

MADE AT: TULLAMARINE

MATERIAL: Plastic

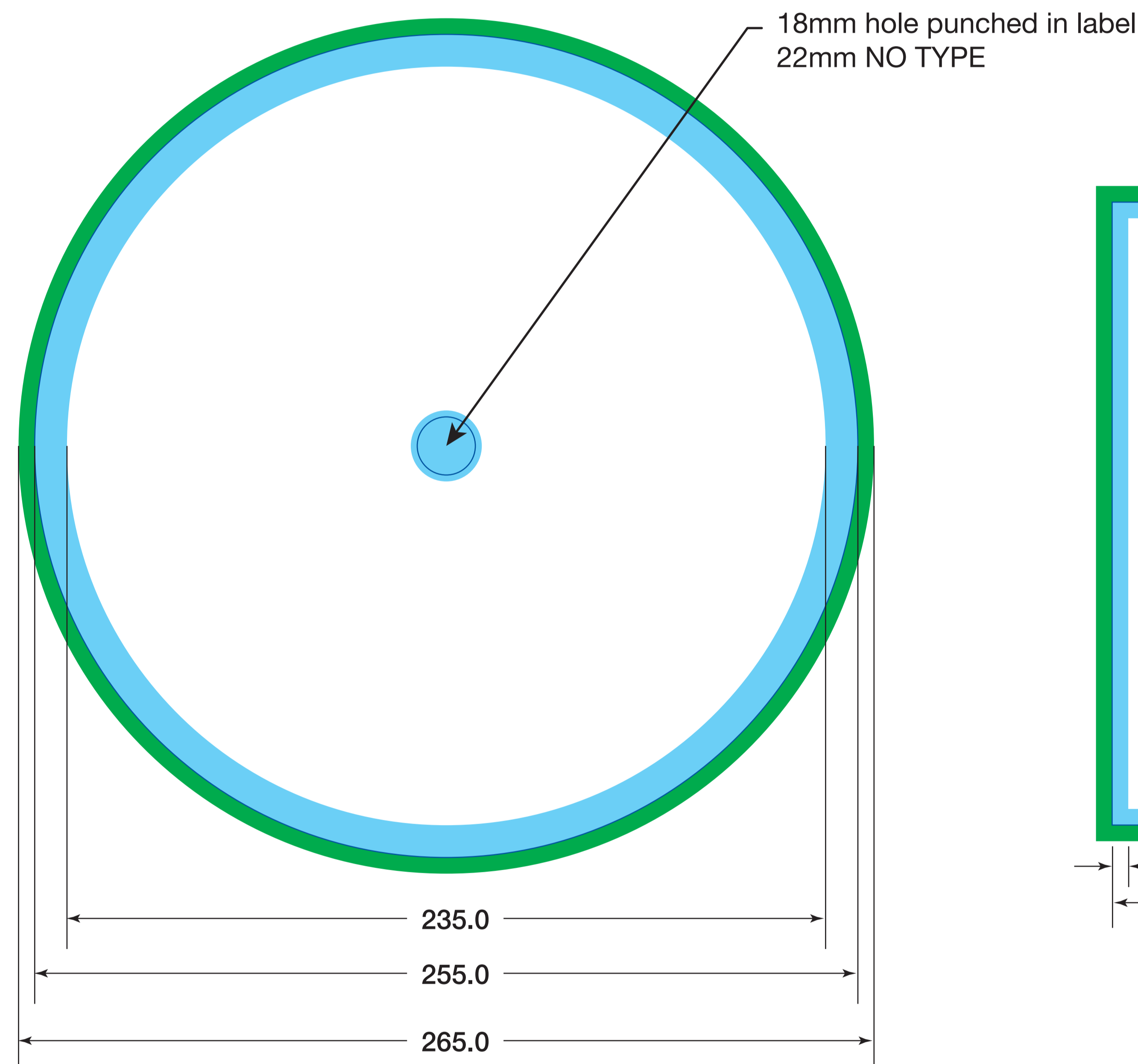
NOMINAL CAPACITY: 10.0 Litres

NOTE:

- 1) ALL MEASUREMENTS IN MILLIMETRES
- 2) DUE TO VARIATION IN MATERIAL AND EXPANSION, DIMENSIONS MAY VARY.



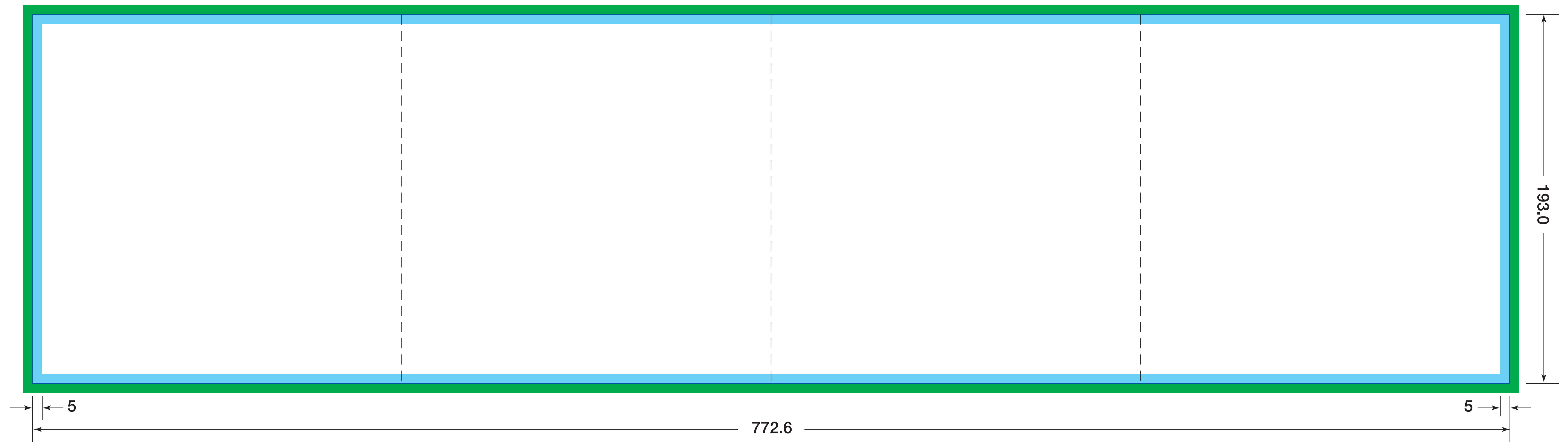
LID



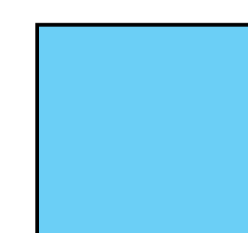
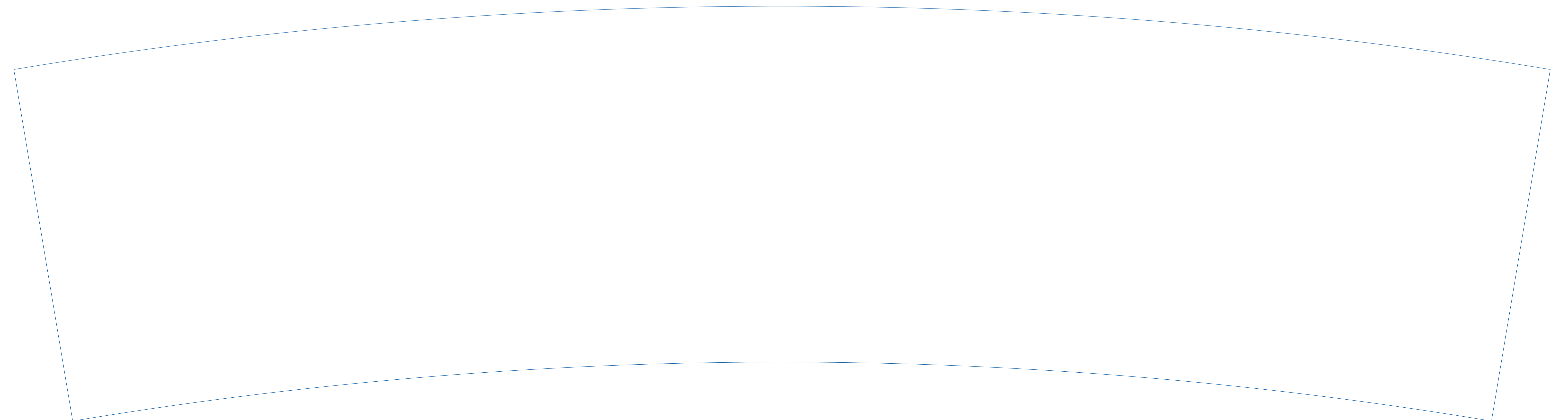
Centreline
Front Panel

Handle
Mounting Lug

Centreline
Back Panel



FULL WRAP



No Text (Type)
Area



Bleed
5mm (min)

*MIN. REVERSE TEXT - 7pt MEDIUM 
 *MIN. REVERSE RULE WEIGHT - 0.6pt 