



DATE:	REVISIONS:
17/12/07	Adjust dieline for revised pail height
27/7/12	Add lid label

ARTWORK TEMPLATE

15.0 Litre XlerPail™
Plastic TE Pail

STANDARD No. 15.0 Litre TE Plastic

AUTH BY:

DATE: 27/07/12

MADE AT: NORTHCOTE

NOTE:
1) ALL MEASUREMENTS IN MILLIMETRES
2) DUE TO VARIATION IN MATERIAL AND EXPANSION, DIMENSIONS MAY VARY.

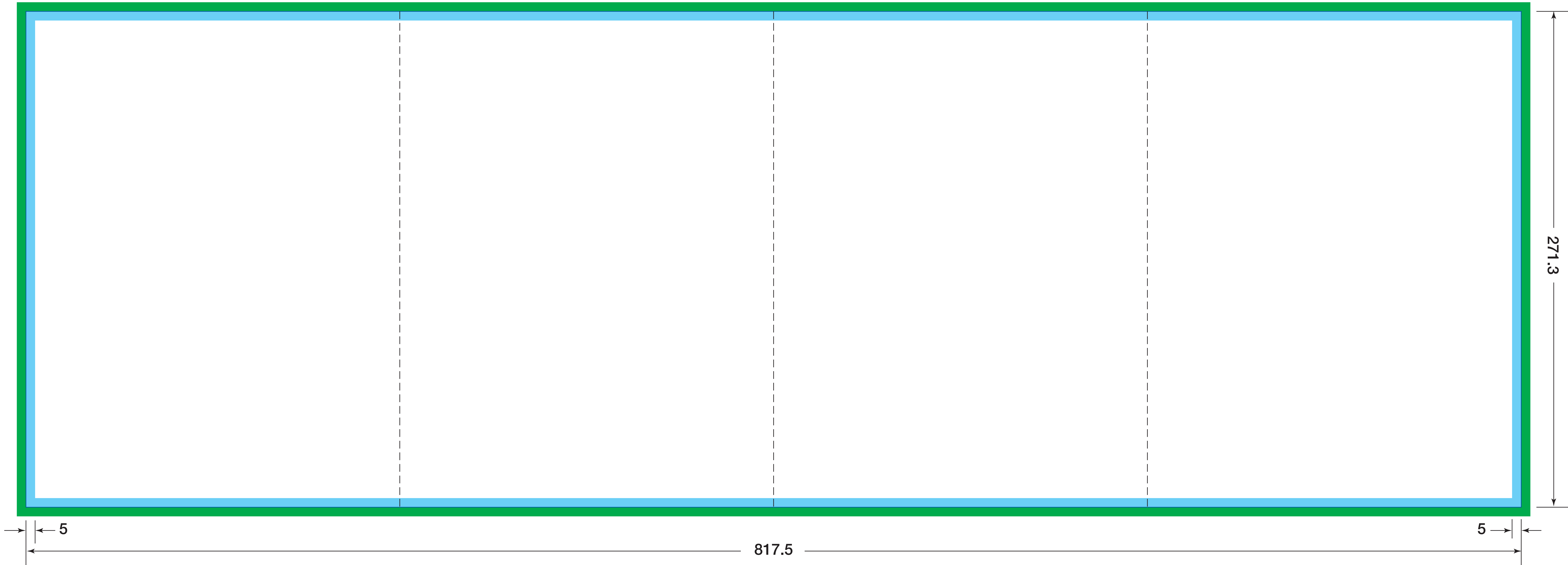


Centreline
Front Panel

Handle
Mounting Lug

Centreline
Back Panel

FULL WRAP



No Text (Type)
Area

Bleed
5mm (min)

*MIN. REVERSE TEXT - 7pt MEDIUM
*MIN. REVERSE RULE WEIGHT - 0.6pt